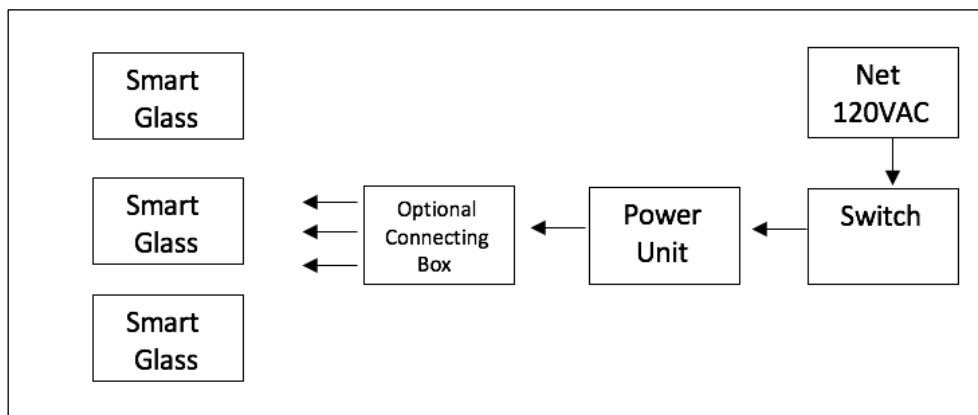


Preparations required for installing Smart Glass

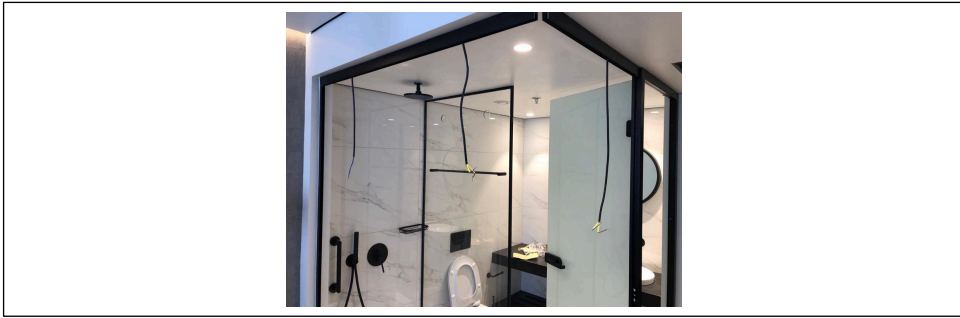
1. Make sure you have final sizes for installation.
2. Power Unit: Please see the electrical scheme of the Smart Glass

Power unit is connected to electrical network and switch on one side (Input) and to the smart glasses on the other side (Output). The Power unit output is 48VAC and it is recommended to connect each glass with a pair of wires, therefore if you have more than one Smart Glass you want to use a standard wires connecting box.



3. Electrical Preparations:

- Make sure you have a space for the power unit. Fix the power unit in this space. Connect the power unit to the electrical network and a switch to control the power unit. (Input 120VAC)
- Wire the power unit to a connecting box (if you have more than one smart glass to power) or directly to the smart glass if you have only one smart glass. (Output 48VAC)
- Guide the wires from the connecting box to the smart glasses on the other side. Position each pair of wires approximately in the top center of the smart glass location.

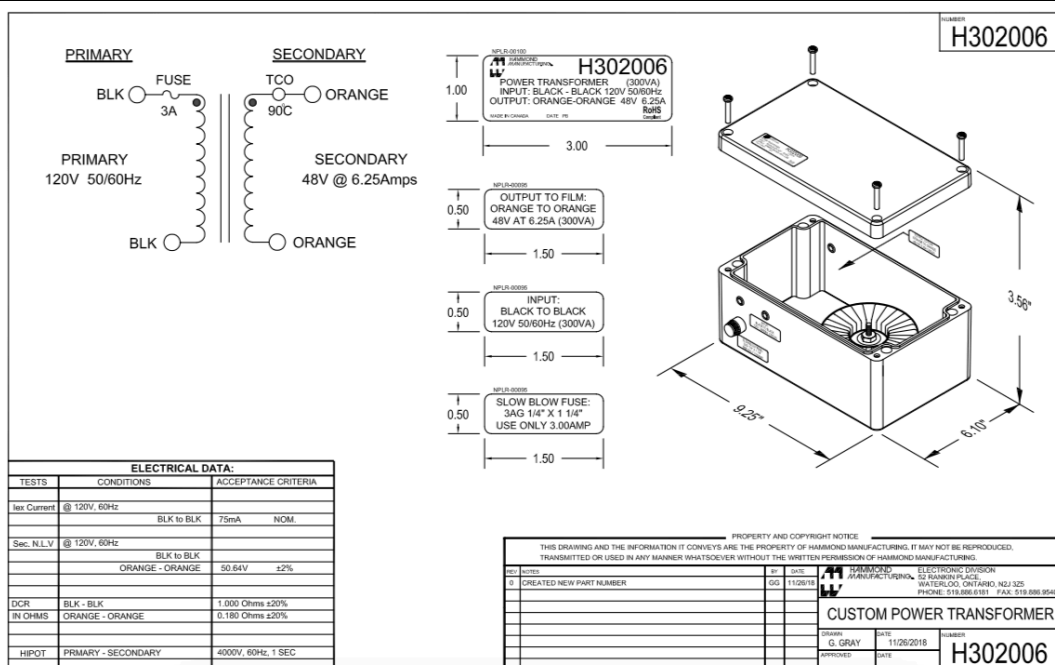
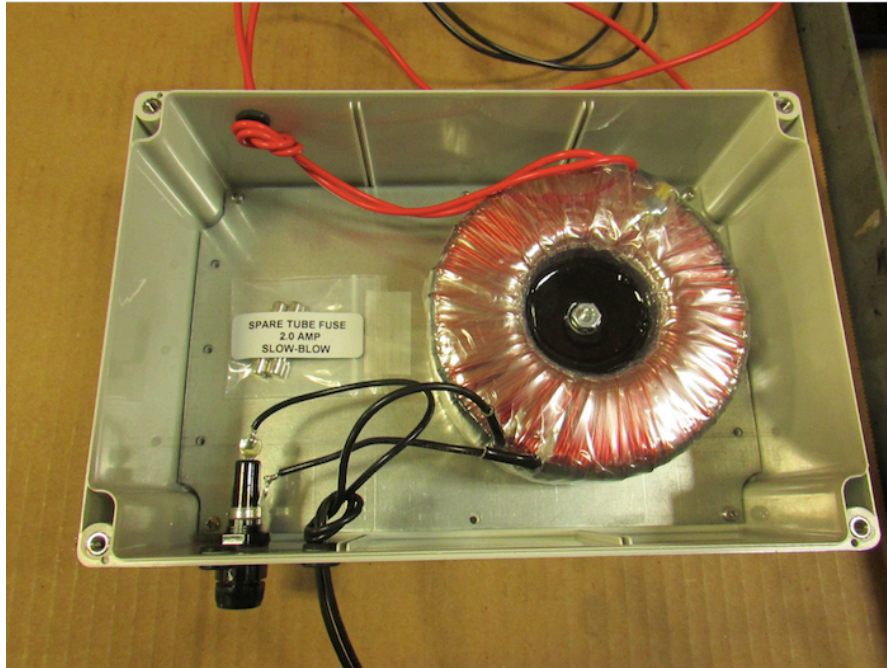


When using Smart Glass in doors, you may use one of the following to guide the wires to the door.



Power Unit Specifications

Type Hammond



Type H-Remote



H Series Smart Film transformer can switch the Smart Film or Smart Glass from opaque to transparent, wireless remote control, reliable switch output, long switch life, with over-voltage protection, overload protection, overcurrent protection. The H Series transformer is relatively small size, light weight and easy for installation.

Transformer specification parameters

Power: 50W,100W

Input:220-240VAC or 110VAC

Output: 48V/60V

Frequency:45-70Hz

Switch voltage: 9V

Output Current: 0.8A,1.6A

Size: 50W 165*98*40mm 1.2kg
100W 180*108*45mm 1.7kg

Remote controller specification parameters

Battery: 1 pcs 23A/12v battery

Function: ON/OFF (No dimming)

Standby power consumption: $\leq 0.04\text{mW}$

Remote control distance: Up to 25 meters

Spectrum: 433.92 MHz

Size: : 120mm x46mmx14mm

Conditions of Use

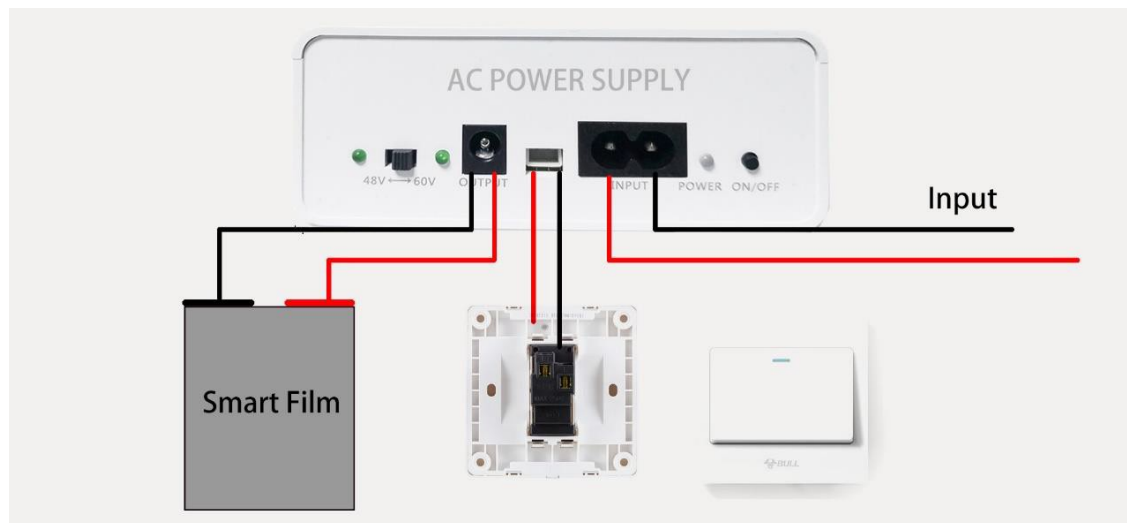
Working temperature: $-20\text{ }^{\circ}\text{C}$ - $60\text{ }^{\circ}\text{C}$

Relative Humidity: 10% -93% (non-condensing)

Package Include

- 1pcs transformer
- 1pcs Remote controller
- 1pcs Input cable
- 1pcs Output cable
- 1pcs Wall Switch cable

Wires Wall Switch Diagram



How to pair with remote control

- Confirm that the wires connected correctly at both ends.
- Make sure your battery isn't low and replace if needed.
- Point your remote controller to the transformer, then long press Upper and middle button simultaneously for 3 seconds.
- Release the buttons immediately once the smart film become transparent

Precautions:

1. Do not expose controller to water or heat source.
2. Before connecting the controller, please verify the input voltage.
3. Follow the wiring diagram, otherwise you may damage the controller and smart film.
4. If remote control is not stable please replace its battery.

Warranty

The warrant confirm that the product will meet its technical specs. The product warranty starts from the date of arrival at the destination, and valid for 24 months. The warranty is limited by the amount of money paid for the remote control and not for other direct or indirect damages. Warranty does not apply to any damage caused by reasons other than product quality, including but not limited to the following:

1. The product is incorrectly or improperly repaired by the customer;
2. Unauthorized modification or misuse;